

# Section 3

## Channel Gratings

### Section 3 Contents

#### E600

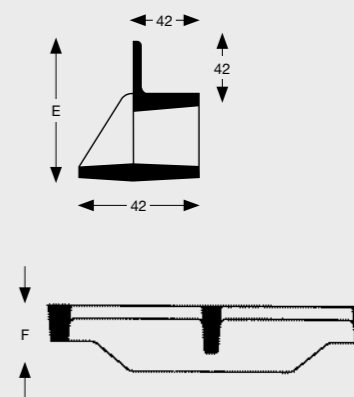
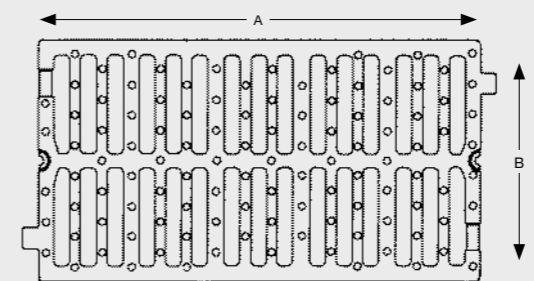
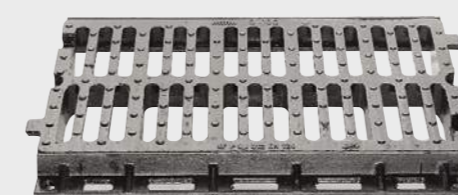
Translinea 47

#### D400

Translinea 47  
Autolinea 48

#### C250

Mecalinea 49



### Translinea

Code	SAP code	BS EN 124 loading class	Grating width G (mm)	Length A (mm)	Duct width B (mm)	Grating thickness F (mm)	Bearer bar depth E (mm)	Waterway area (cm <sup>2</sup> )	Waterway area (cm <sup>2</sup> )
RH40 T6HD	EETL40PF	E600	400	750	350	35	-	1290	46
RH40 T4HD	EDTL40PF	D400	400	750	350	35	-	1290	47
<b>Bearer bar</b>									
RH40 T6GR	E7	E600/D400	-	750	-	-	100	-	10
RH40 T6GS	E8	E600/D400	-	800	-	-	100	-	10.6
<b>End Piece</b>									
RH40 T6AD	E10	E600/D400	-	-	-	-	-	-	4.4
<b>Connecting Piece</b>									
RH40 H8ED	E9	E600/D400	-	-	-	-	-	-	0.5

**E600**  
CLASS

APPLICATION

**5**  
GROUP

**NF**  
MARK

**D400**  
CLASS

APPLICATION

**4**  
GROUP

**NF**  
MARK

### E600

#### Features

- Modular/linear formation
- Bolt-down grate
- Interlocking
- Suitable for crosswise traffic when secured appropriately

All areas subject to high axle loads such as aircraft and port areas, industrial sites etc.

See page 64 for installation information.

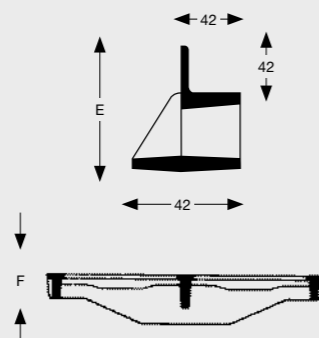
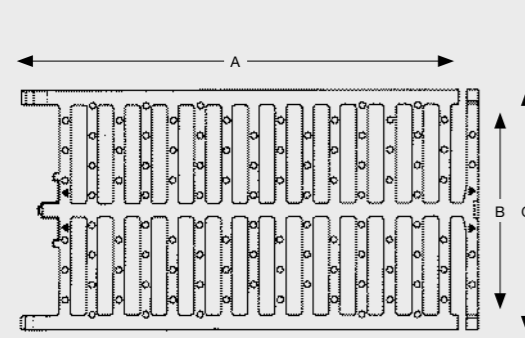
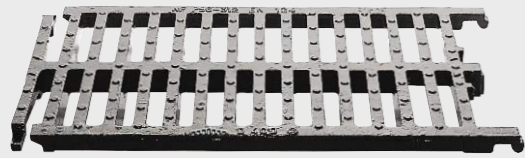
### D400

#### Features

- Modular/linear formation
- Bolt-down grate
- Interlocking
- Suitable for crosswise traffic when secured appropriately

Kerbside of roads carrying intense traffic including points which may be subject to crosswise traffic eg. lay-bys, breaks in central reservations, crossroads etc.

See page 64 for installation information.

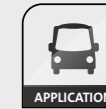
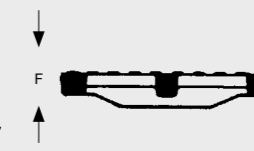
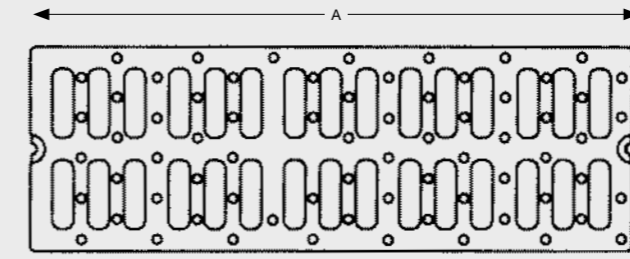
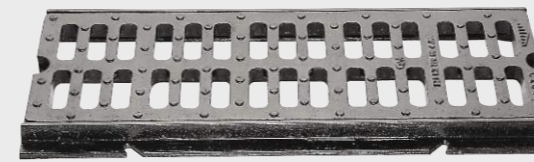


**Autolinea**

Code	SAP code	BS EN 124 loading class	Grating width G (mm)	Length A (mm)	Duct width B (mm)	Grating thickness F (mm)	Bearer bar depth E (mm)	Waterway area (cm <sup>2</sup> )	Waterway area (cm <sup>2</sup> )
RE30 H9HD	EDAL30PF	D400	300	750	250	35	-	1080	22.9
RE40 H9HD	EDAL40PF	D400	400	750	350	35	-	1500	33
RE50 H9HD	EDAL50PF	D400	500	750	450	35	-	2000	43
<b>Bearer bar</b>									
RH40 T6GR	E7	D400	-	75	-	-	100	-	10

- Features**
- Modular/linear formation
  - Spring-bar grate interlocking

For areas of high surface water run-off suitable for longitudinal drainage channels carrying light traffic only.  
 Not recommended for areas susceptible to turning traffic.  
 For installation instructions see page 65.



**C250 – Mecaline**

Code	SAP code	BS EN 124 loading class	Grating width G (mm)	Length A (mm)	Duct width B (mm)	Grating thickness F (mm)	Bearer bar depth E (mm)	Waterway area (cm <sup>2</sup> )	Waterway area (cm <sup>2</sup> )
<b>Grating (with slots)</b>									
HG420 1	ECML20PF	C250	200	750	140	27	-	580	16.1
HG425 1	ECML25PF	C250	250	750	190	27	-	680	21.5
HG430 1	ECML30PF	C250	300	750	240	27	-	900	26
RE35 H3HD	ECML35PF	C250	350	750	290	27	-	1020	30
HG440 1	ECML40PF	C250	400	750	340	27	-	1290	35
HG450 1	ECML50PF	C250	500	750	440	27	-	1590	42
RE60 H3HD	ECML60PF	C250	600	750	540	27	-	1890	54
RE70 H3GD	ECML70PF	C250	700	750	640	27	-	2180	67
<b>Bearer bar</b>									
RE30 H3GD	E5	C250	-	750	-	27	36	-	4
<b>Connecting Piece</b>									
RE30 H3ED	E6	C250	-	-	-	-	-	-	0.5

- Features**
- Modular/linear formation

For areas of high surface run-off not subject to fast-moving through traffic eg. kerbside of town roads and streets, including crossing points subject to slow-moving traffic where connecting pieces must be used – car parks etc.  
 Not recommended for areas susceptible to turning traffic.